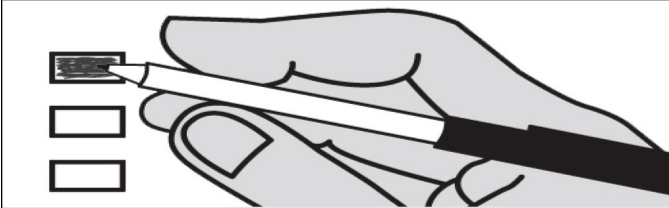


Sample Ballot
Special Election
April 26, 2022
Kitsap County, Washington

This ballot contains all contests that will appear on the April 26, 2022 Special Election ballot. Only the ballot issues that apply to the precinct where you are registered to vote will appear on your ballot.

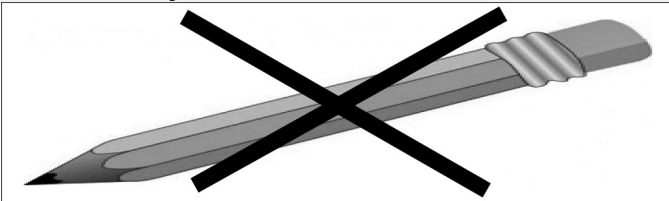
How to vote this ballot

Use dark blue or black ink to fill in the box to the left of your choice.

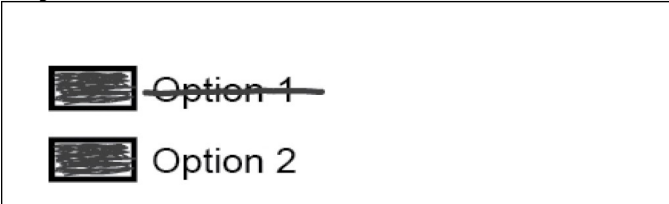


Mark **one** choice for a contest. If you mark more than one choice, no votes will be counted for that contest.

Do not use pencil



If you make a mistake



Draw a line through the entire measure response, then you may make another choice. Ballot information is available online at: kcowa.us/elections.

For a list of the people and organizations that donated to state and local candidates and ballot measure campaigns, visit: www.pdc.wa.gov

Local Measure

Central Kitsap School District No. 401
Proposition No. 1

Replacement School Support Levy for Educational Enrichment Programs and Operations

The Board of Directors of Central Kitsap School District No. 401 approved Resolution No. 11-21-22 concerning the replacement of an expiring school support levy. This proposition provides funding for educational programs and operations not funded by the State. If approved, Proposition 1 will authorize the District to levy the following excess taxes, on all taxable property within the District, all as provided in Resolution 11-21-22:

Collection Years	Estimated Levy Rate/\$1,000 Assessed Value	Levy Amount
2023	\$1.50	\$20,000,000
2024	\$1.50	\$20,000,000

Should this proposition be approved?

Yes

No