



Protecting, Stewarding, & Connecting People to the Land

Nathan Daniel, Executive Director
Central Kitsap Community Council
April 2nd, 2025



Don Paulson



Don Paulson





Mission

Natural Habitats, Open Spaces, Rural Landscapes

To protect the most ecologically valuable lands for wildlife use and human enjoyment.



Traditional Lands

GPC acknowledges the Suquamish, Port Gamble S'Klallam, Skokomish, Squaxin Island, Nisqually, and Puyallup Tribes as the traditional custodians of the land on and around GPC's working region.



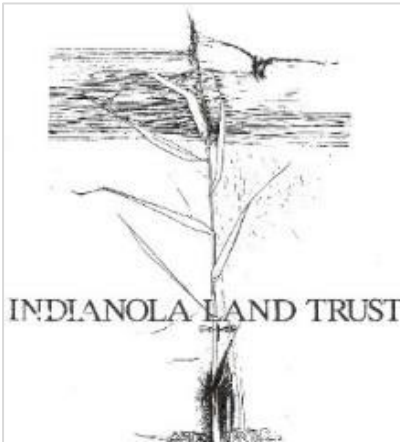


About Great Peninsula Conservancy

Private, independent, non-profit land trust founded in 2000



*Peninsula
Heritage*
LAND TRUST



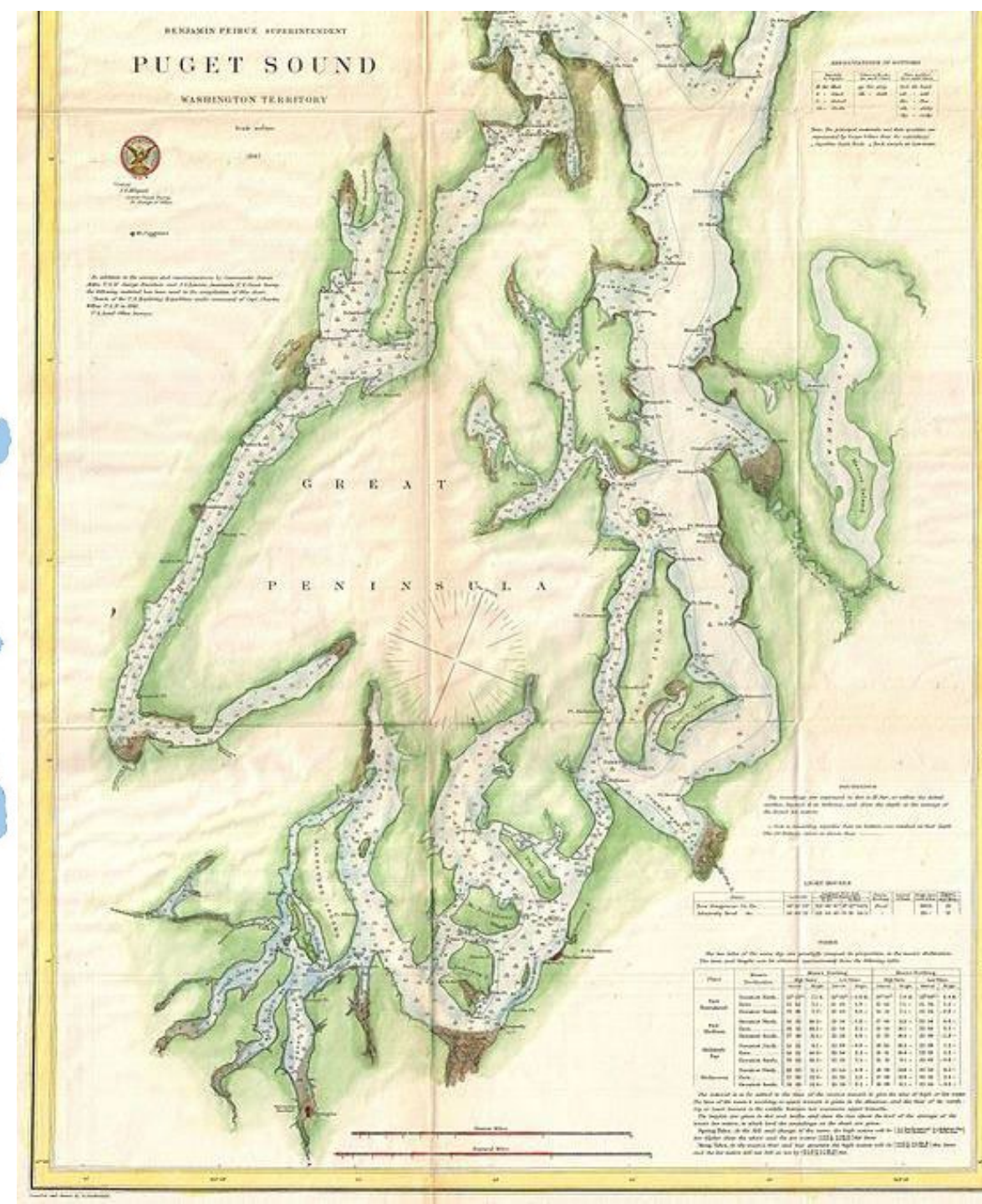
HOOD CANAL
LAND TRUST





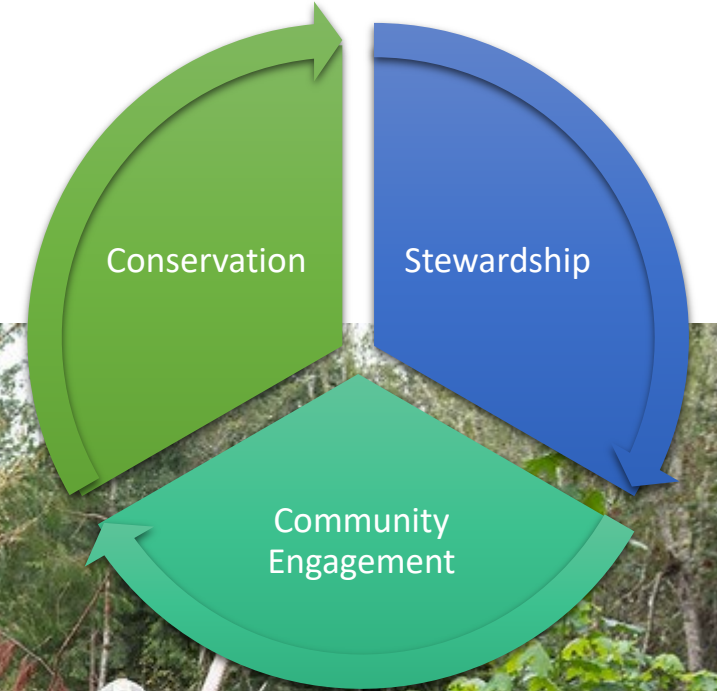
Where We Work

- Kitsap, western Pierce, and north Mason counties
- Approximately **348,000** residents in this region (and rising)
- **799** donors and **4,022** subscribers make up the lifeblood of our organization
- Strong partnerships with local governments, tribes, and non-profits



What We Do

- We **conserve** forests, shorelines, wetlands, streams, and farmland
- We **steward** these protected lands in perpetuity
- We **connect community** members with hands-on opportunities to restore ecologically valuable lands and connect with nature



Recent Projects



The Divide Community Forest

467 acres



Petersen Farm

142 acres

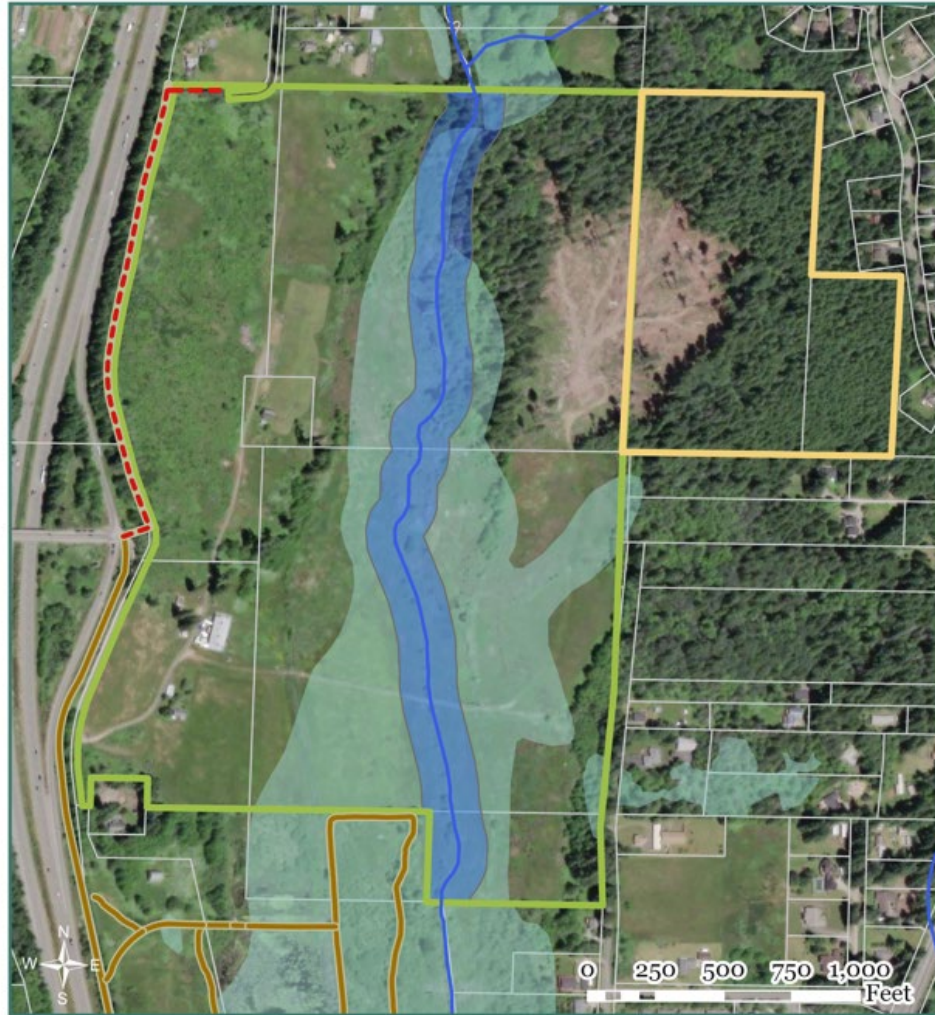









Tahuya River Preserve

183 acres



Petersen Farm



- | | |
|---|---|
|  Existing Conservation Easement Boundary |  Riparian Buffer (105 ft.) |
|  Proposed Conservation Easement Boundary |  Wetlands |
|  Proposed Clear Creek Trails Expansion |  Kitsap County Tax Parcels |
|  Existing Clear Creek Trails | |

Reactivating farmland in Kitsap Co.





Stewardship

- Baseline Reports/Management Plans
- Annual Monitoring
- Routine Maintenance
- Neighbor/Landowner Relationships
- Habitat Enhancement/Restoration
- Research





Management

142 properties
3,679 acres



Restoration



Community Conservation





Youth Education

GREAT PENINSULA CONSERVANCY'S
LANDLABS





GREAT PENINSULA CONSERVANCY'S
LANDLABS

Stillwaters Environmental Center



Research



Education



Restoration



2025 Salmon in the Classroom

Salmon in the Classroom is a program supported by many partners including Kitsap County, the Suquamish Tribe, CCTF, & GPC.

2025 by the numbers:

- 23 Schools
- 1,134 Students
- 2,046 Salmon Released





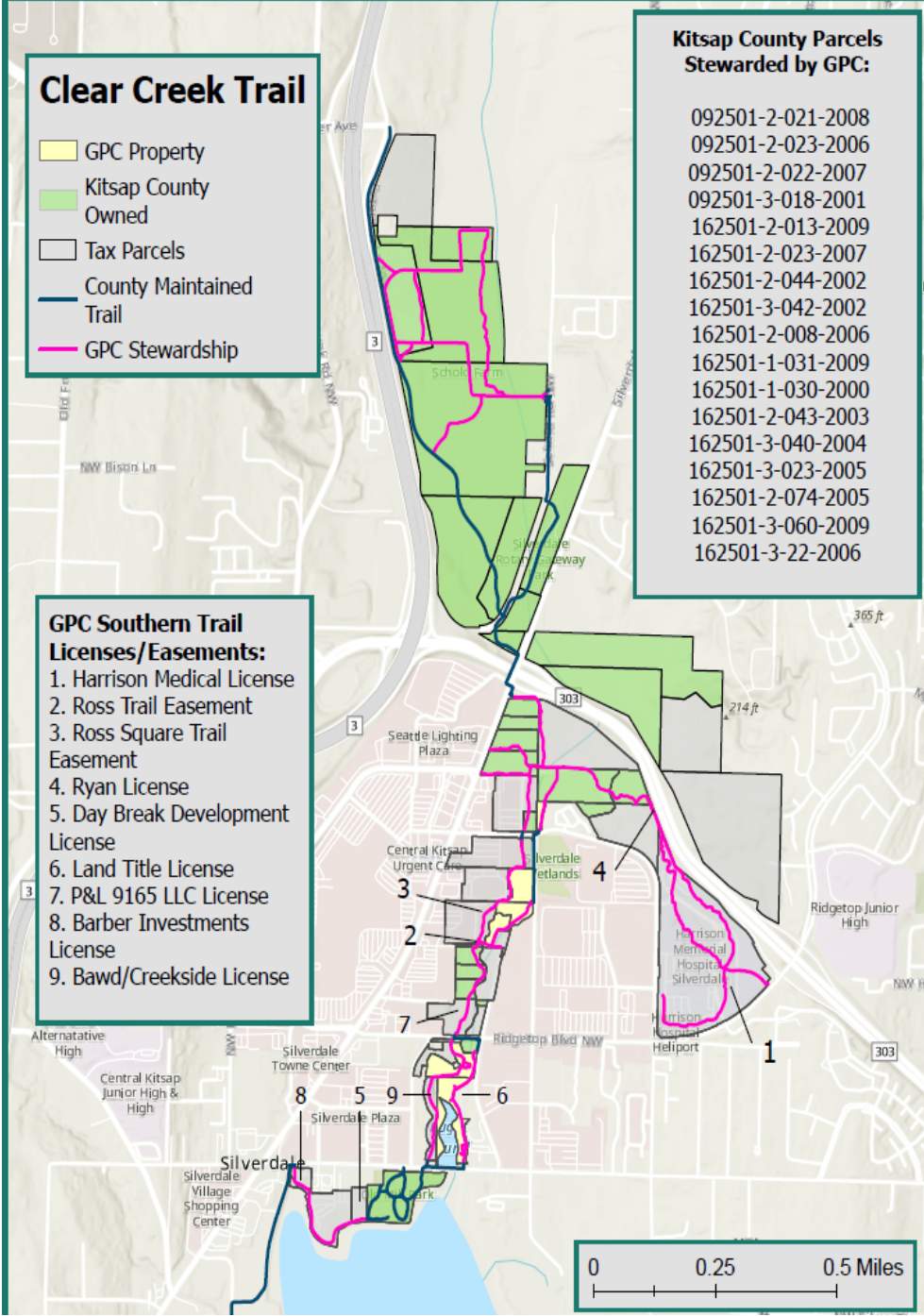
Clear Creek Trail

- 1993 – The Best family donates land and barn to Kitsap Land Trust (now GPC)
- 1993 – The Clear Creek Task Force forms as a special program of GPC and develops Clear Creek Trail
- 1999 – GPC enters a 25-year Agreement with Kitsap County to jointly manage Clear Creek Trail (ended 2024)
- 2025 – In February, Clear Creek Task Force handed over trail management and responsibilities to GPC
- Today – GPC and Kitsap County are negotiating a new Joint Use Agreement





- 1993 – The Best family donates land and barn to Kitsap Land Trust (now GPC)
- 1993 – The Clear Creek Task Force forms as a special program of GPC and develops Clear Creek Trail
- 1999 – GPC enters a 25-year Agreement with Kitsap County to jointly manage Clear Creek Trail (ended 2024)
- 2025 – In February, Clear Creek Task Force handed over trail management and responsibilities to GPC
- Today – GPC and Kitsap County are negotiating a new Joint Use Agreement



Clear Creek Task Force



Clear Creek Trail Team



RESOLUTION OF SUPPORT FOR THE CLEAR CREEK TRAIL

The Clear Creek Task Force is a citizen based group of volunteers whose Mission is "To create and maintain a community-wide network to mobilize support, educate and focus actions to preserve, protect, and restore the Clear Creek ecosystem." The Task Force is under the aegis of the Great Peninsula Conservancy, an established 501(c)3 organization, whose mission includes long term stewardship of properties under its mantle. Some sections of the trail have been permitted on County lands, some are under License or Easements with private owners and some have been property donations to the Conservancy by private owners along the creek.

The Task Force's efforts are primarily funded by private donations, but on occasion it has applied for and received grants from various sources. At times, conditions of a grant require demonstration that the organization is valid and supported by the community and local government.

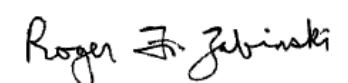
In view of the fact that the Task Force has been in existence since 1993 and has constructed and maintains over 5 miles of trails, the Central Kitsap Community Council hereby proclaims the Task Force and the Clear Creek Trail to be a unique and very valuable asset for the Central Kitsap Community; and therefore issues this resolution of support.

Resolved by the Central Kitsap Community Council, June 17, 2009.

Robert Moyer, President



Roger Zabinski, Secretary



[About](#)[Our Work](#)[Connect](#)[Support](#)[Events](#)

Clear Creek Trail Team





Clear Creek Trail Team

Goal:

Work with the Central Kitsap Community to ensure Clear Creek Trail remains a clean, and well-maintained outdoor space where people can safely connect with nature

Get Involved:

- Your Business Can Adopt a Trail Section
- Volunteer to Help Coordinate Trail Work
- Attend a Trail Work Party
- Table Community Engagement Days on the Trail



Membership and Legacy Society

- GPC members are our life blood
- Legacy Society gifts provide for the long-term sustainability of GPC



Celebrating
how far
we've come
while we
continue to
look forward
to what's
next

Celebrating 25 years!





Today

14 Staff
4 AmeriCorps
1 New Office





Thank you!

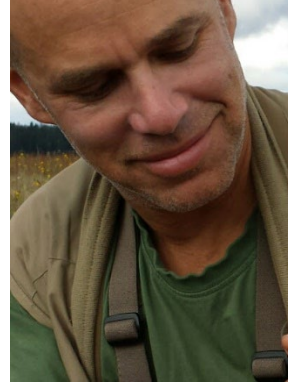
The GPC Staff



Nathan Daniel
Executive
Director



Erik Steffens
Conservation
Director



Adrian Wolf
Stewardship
Director



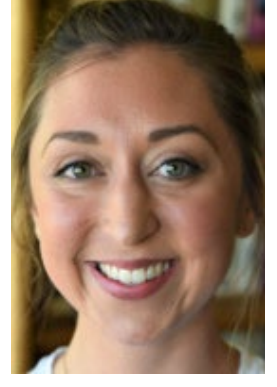
Claire Voris
Donor Relations Manager



Katherine Tacke
Development &
Communications
Manager



Dylan Tenney
Finance Manager



Paige Morris
Administrative
Manager



Monica Montgomery
Conservation Project
Manager



Ali Querin
Conservation
Project Manager



Micaela Petrini
Stewardship Manager



Eva Blair
Stewardship Associate



Sam Hale
Communications
Manager



Gabriel Newton
Community Engagement
Manager



Bri Ross
Community Engagement
Coordinator



Nathan Daniel
Office: 360-373-3500
nate@greatpeninsula.org
greatpeninsula.org



E-News

Donate



Questions?