



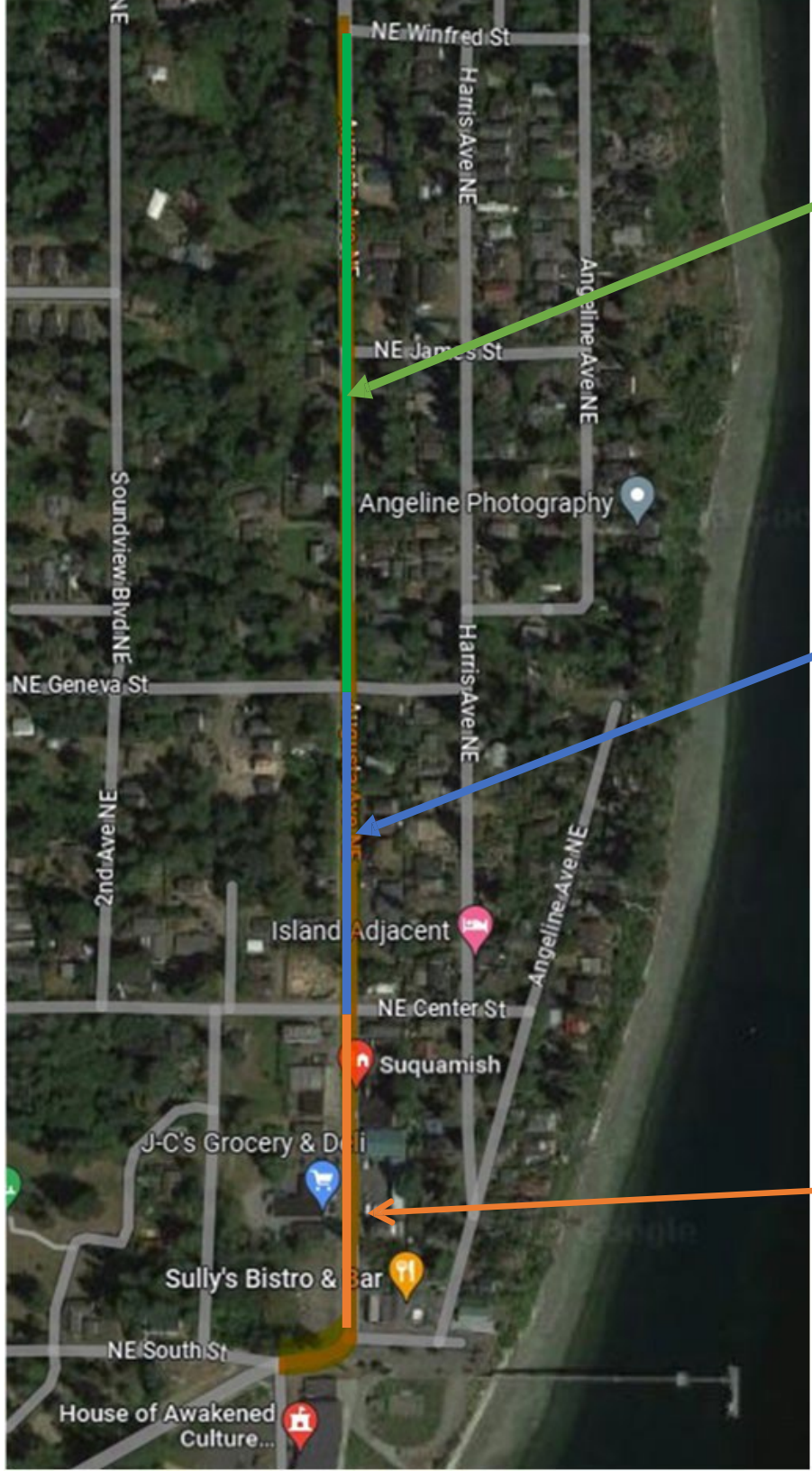
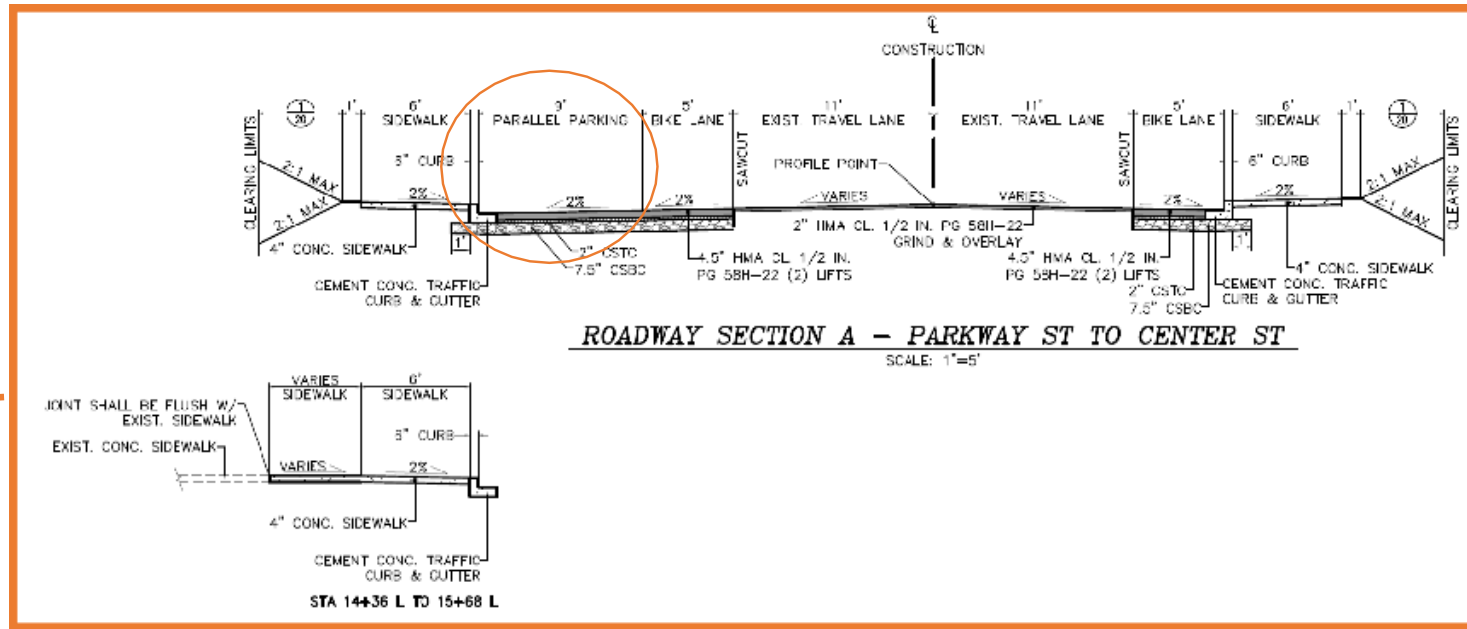
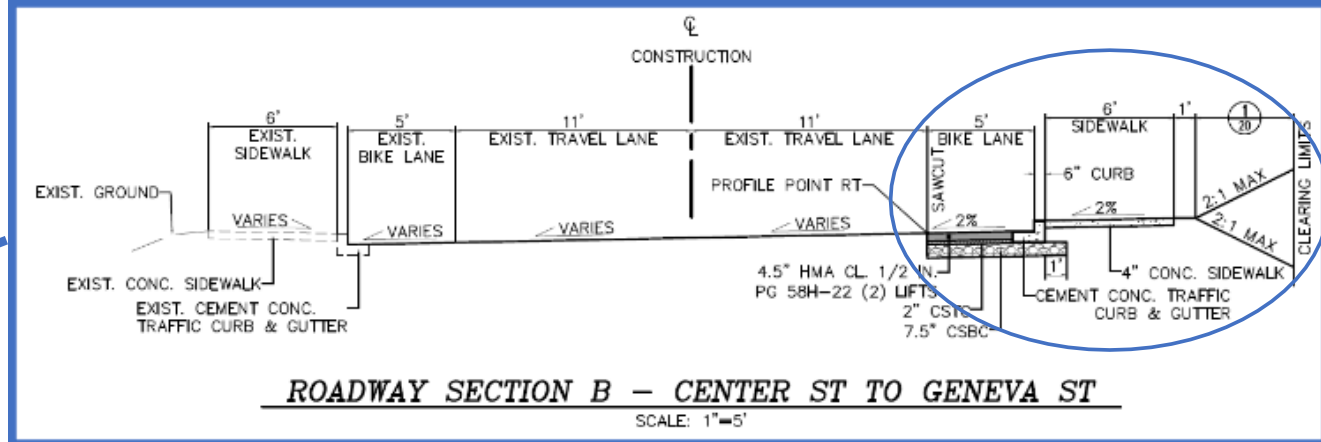
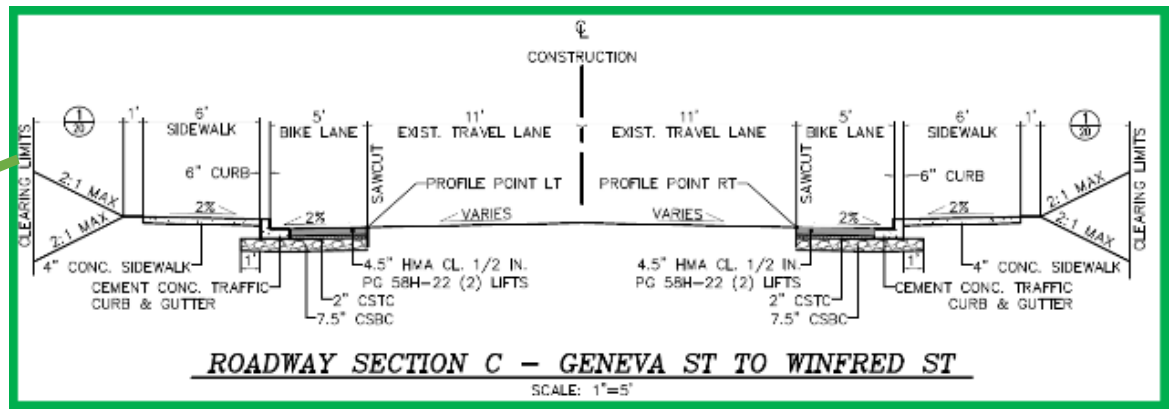
SUQUAMISH/AUGUSTA – SOUTH ST. TO WINFRED

NON-MOTORIZED IMPROVEMENTS (CRP 1639, SDAP 24-04557)

Anthony Burgess, PE
Kitsap County Public Works – Roads
Capital Program Manager
(360) 981-1767
awburgess@kitsap.gov



Kitsap County Department of Public Works



EXISTING CONDITIONS & BASIN DELINEATION

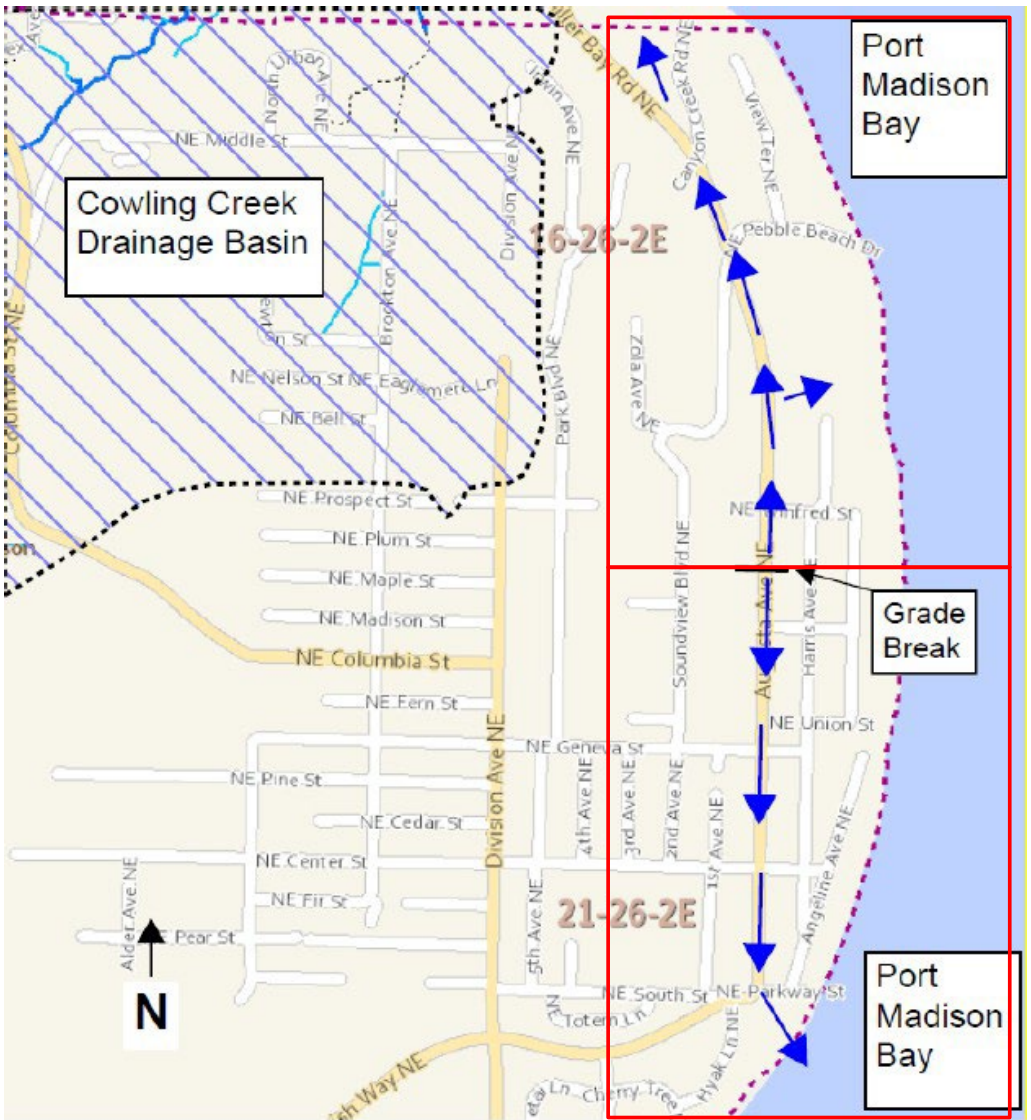


FIGURE 4. BASIN DELINEATION FROM DOWNSTREAM ANALYSIS

Subbasin Areas - Informal contributing basin to the project site discharges to a stormwater outfall to Port Madison Bay at Parkway St.

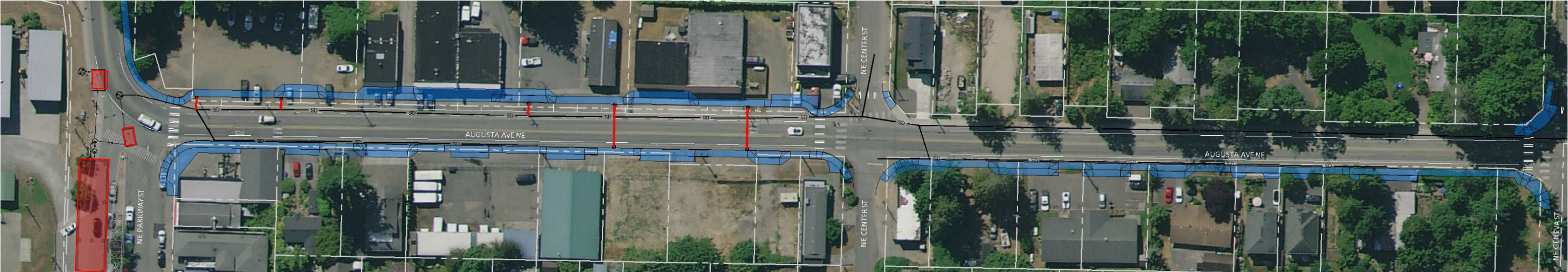
Subbasin 1 - Stormwater north of the grade break line sheet flows into drainage ditches on both sides of the roadway and continues north.

- East side ditch drains into a natural depression 300 ft north of Winfred St.
- West side continues north to Canyon Creek Rd, enters a cross culvert, and discharges to a canyon to Port Madison Bay.

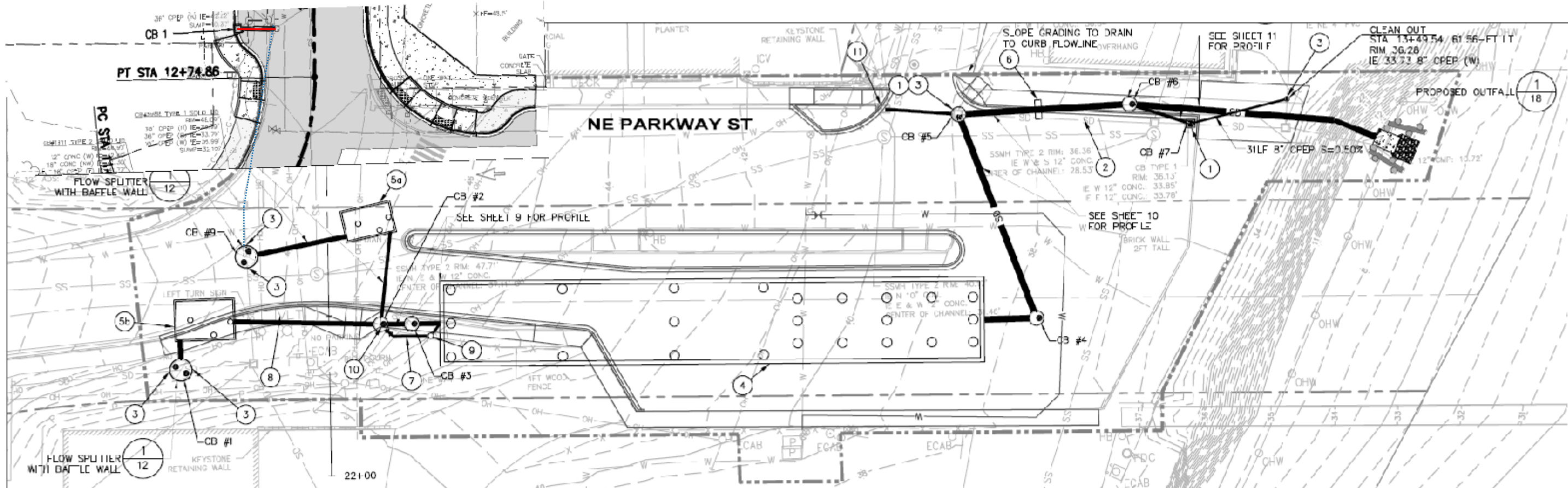
Subbasin 2

- Stormwater sheet flows into ditch, onto private properties or into a closed conveyance system.
- Ultimate discharge point is to a stormwater outfall to Port Madison Bay at the end of Parkway St.

PROPOSED STORMWATER SYSTEM



SUQUAMISH REGIONAL STORMWATER FACILITY



FUNDING

Kitsap County Public Works Road Fund

Puget Sound Regional Council Rural Town Centers and Corridors Program (PE only)

Funding

Phase	Start Date	Federal Fund Code	Federal Funds	State Fund Code	State Funds	Local Funds	Total
PE	2025	STBG(UL)	449,800		0	70,200	520,000
RW	2026		0		0	600,000	600,000
Project Totals			449,800		0	670,200	1,120,000

30% ENGINEER'S ESTIMATE

TOTAL CONTRACT COST	\$ 2,861,382.00
CONSTRUCTION CONTINGENCIES (30%)	\$ 860,000
TOTAL CONTRACT COST (with contingency)	\$ 3,721,382
WSDOT SERVICES	\$ 10,000
PRELIMINARY ENGINEERING	\$ 520,000
RIGHT-OF-WAY	\$ 600,000
CONSTRUCTION ENGINEERING (12%)	\$ 344,000
ESTIMATED PROJECT TOTAL	\$ 5,195,382

PROJECT SCHEDULE

- ✓ Area of Potential Effects (APE) WSDOT LP Concurrence: August 9, 2024
- ✓ ESA No Effect Documentation (under ESA 4d) Approved: August 20, 2024
- ✓ 30% Review Meeting: October 23, 2024

- NEPA Approved: March 2026
- 60% Review Meeting: April 2026
- 90% Review Meeting: December 2026
- ROW Certification: October 2027

Project is currently designing driveways to determine Temporary Construction Easement needs (expected June/July)

The County is currently submitting for Right of Way and Construction Funding, and the project is planned for Construction in 2028.

PROJECT PAGE

kcowa.us/suquamishaugusta



Suquamish/Augusta – South St. to Winfred



Suquamish/Augusta - South St. to Winfred

Non-Motorized Improvements Project



Physical Completion: April 2026

Construction Contract: \$4.26 M

Cost to date: \$4.19M

Acres of Impervious Surface Treated: 182
Acres

- TSS, Copper/Zinc and Phosphorous