

Kingston Ferry Congestion Mitigation Project

Kingston Community Advisory Council Meeting

March 13, 2024



SR 104 Working Group Members



AGENDA

1

Project
History

2

About the
Project

3

Operations
Schedule

4

Timeline

5

Q&A

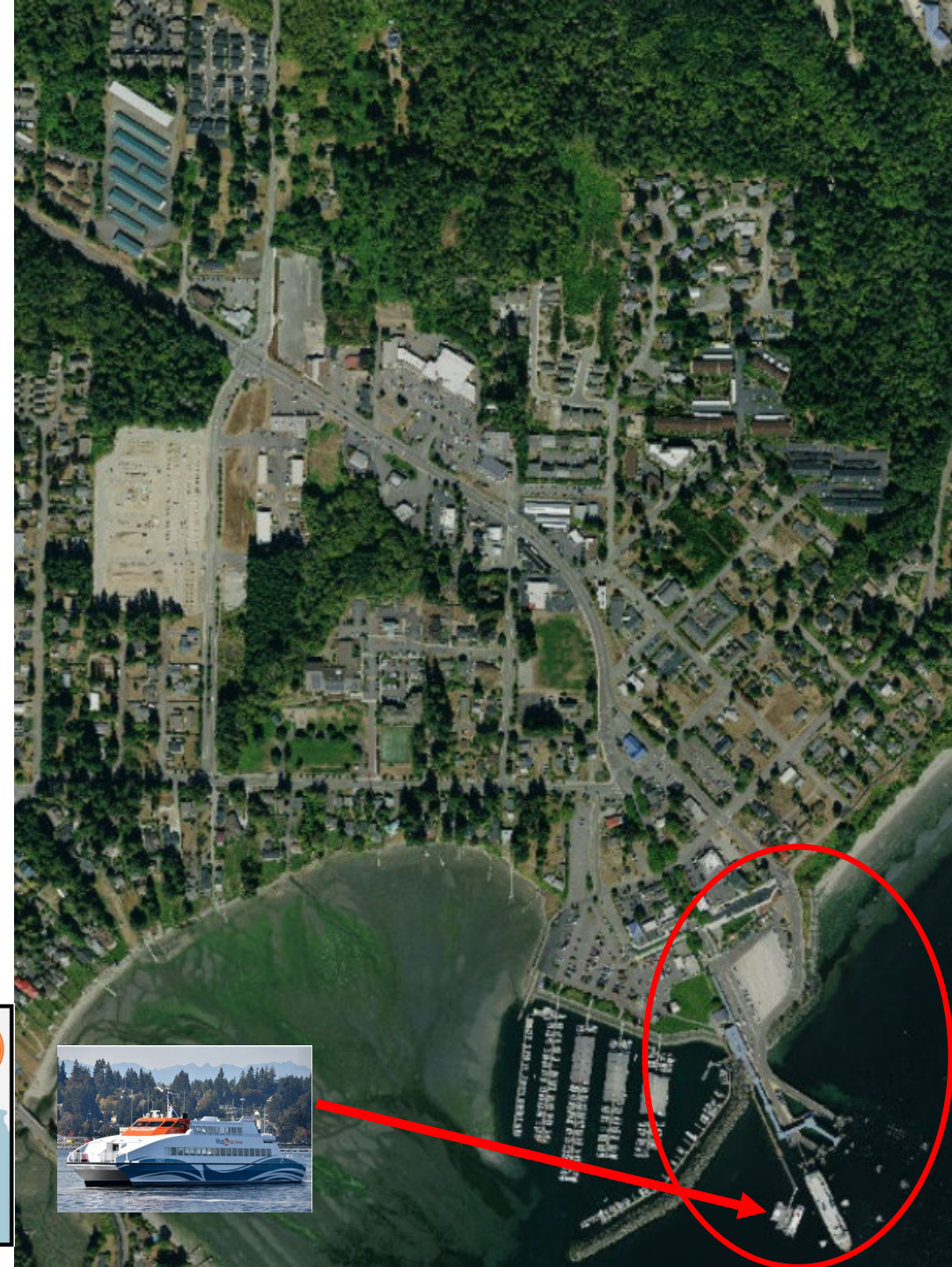
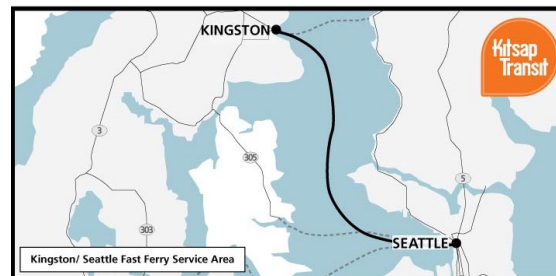
Kingston: A Transportation Hub....



- North King and Snohomish Counties
- Kitsap and Olympic Peninsula

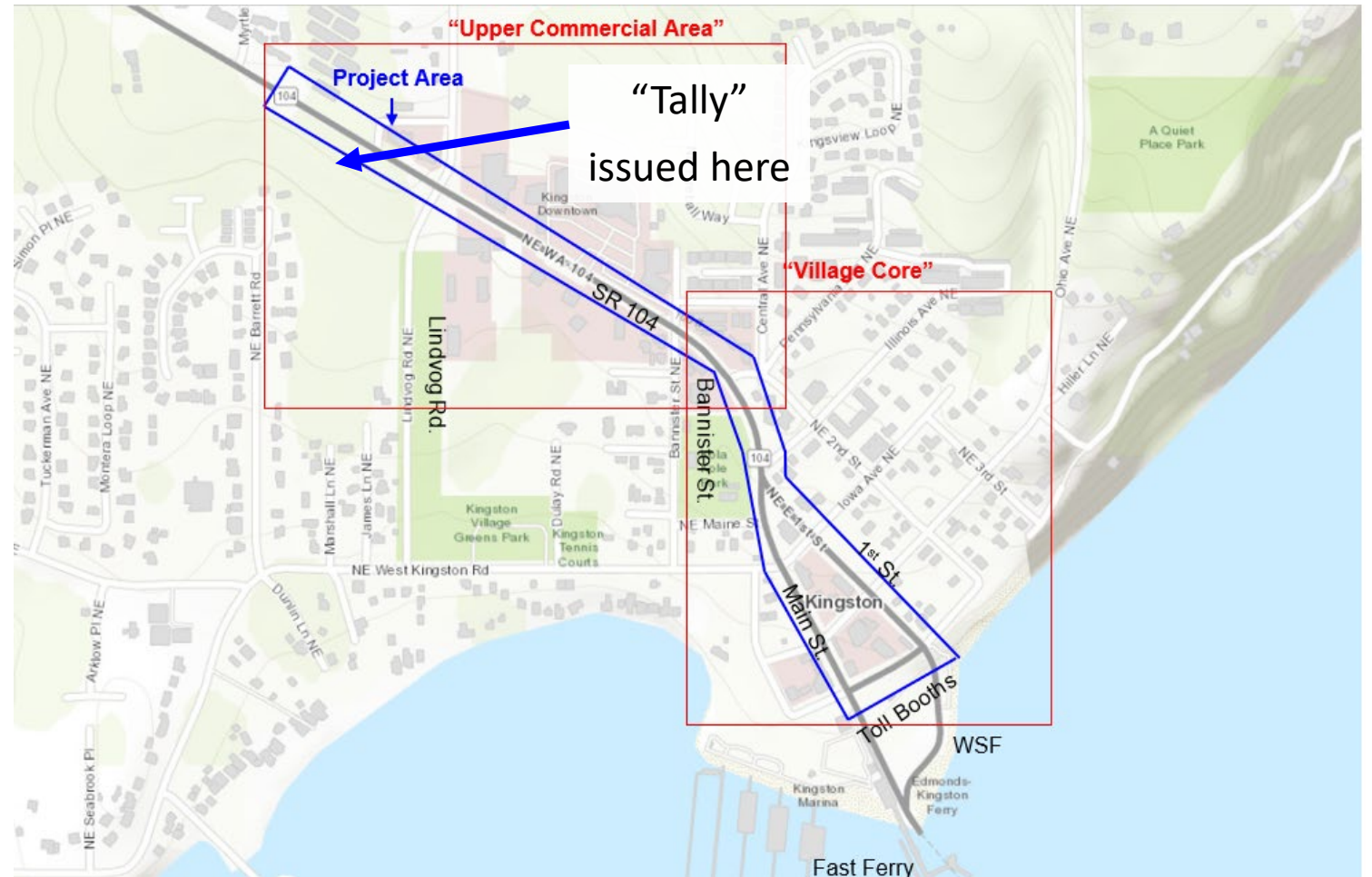
SR 104 in Kingston....

- WSF Kingston/Edmonds ferry route
 - 21-24 sailings each day
 - 2.1 million vehicles per year
 - 2nd highest vehicle volume in WSF system
 - 1.9 million additional passengers per year
 - 3rd highest walk-on volume in WSF system
- Kitsap Transit Fast Ferry
 - Kingston to Seattle
 - About 40 minutes
 - 6 daily sailings M-F
 - Sat. in summer



First Phase – Active Traffic Management System

- Address traffic concerns in the downtown corridor
- Use technology to actively manage the traffic through Kingston
- Electronically emulate the “tally system”



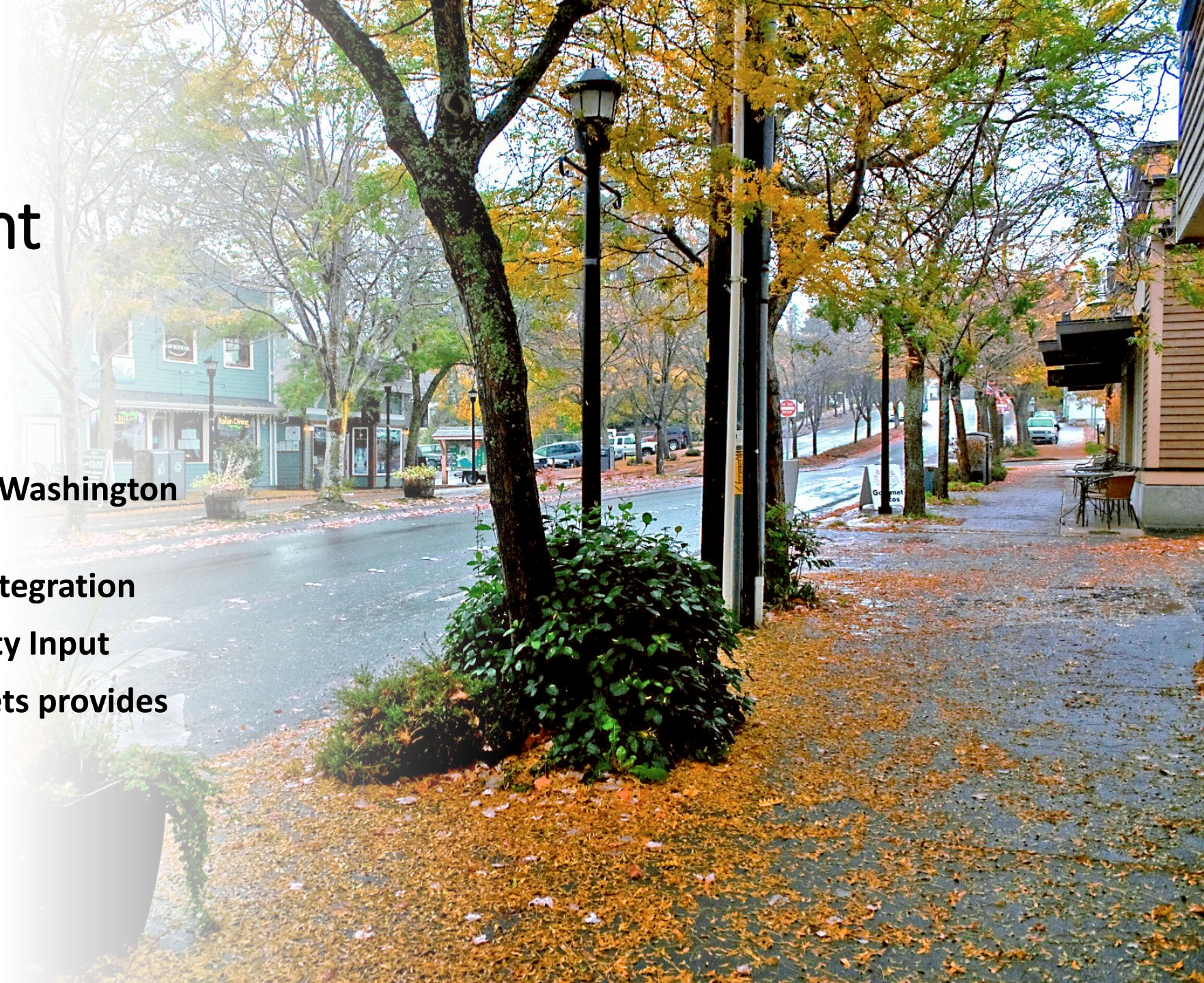
SR104 Realignment

- Construct 4-lane segment on 1st
- Pedestrian improvements
- Roundabouts at Iowa/1st & Main
- Relocate toll booths, restripe ferry lanes on terminal
- Transit and bikes use Main Street
- Redevelopment of “Main Street”



“Main Street” Redevelopment

- WSDOT led process
- Funded by Move Ahead Washington transportation bill
- SR104 Working Group integration
- Outreach and Community Input
- Kingston Complete Streets provides basis of design

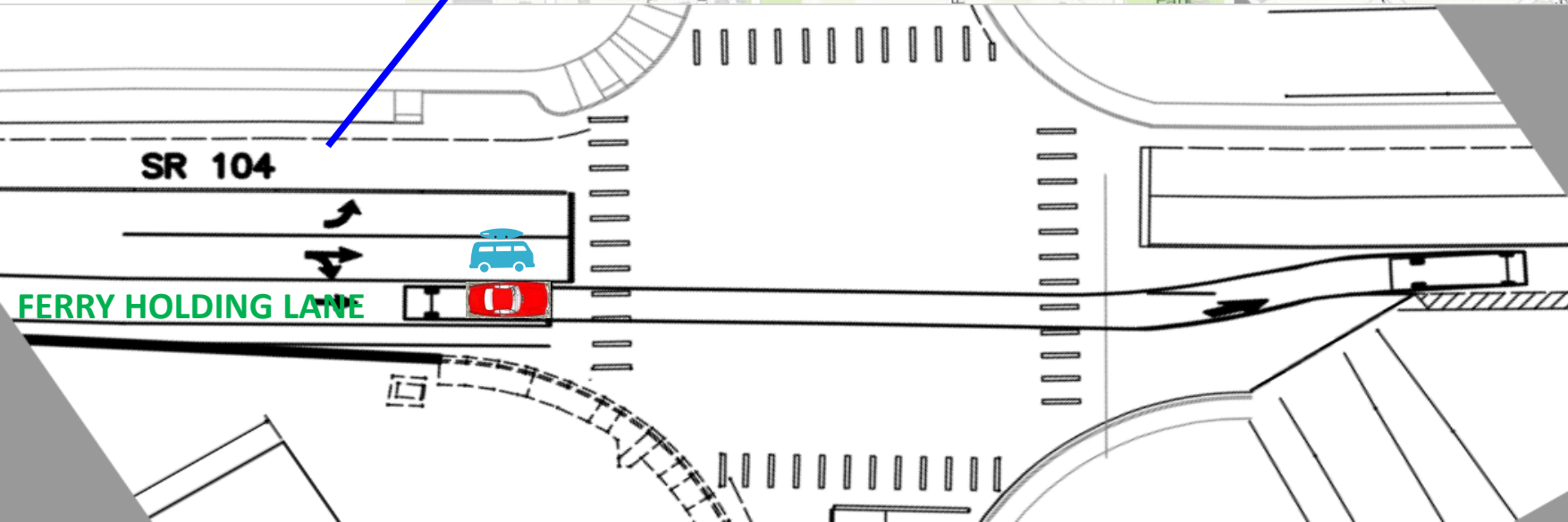
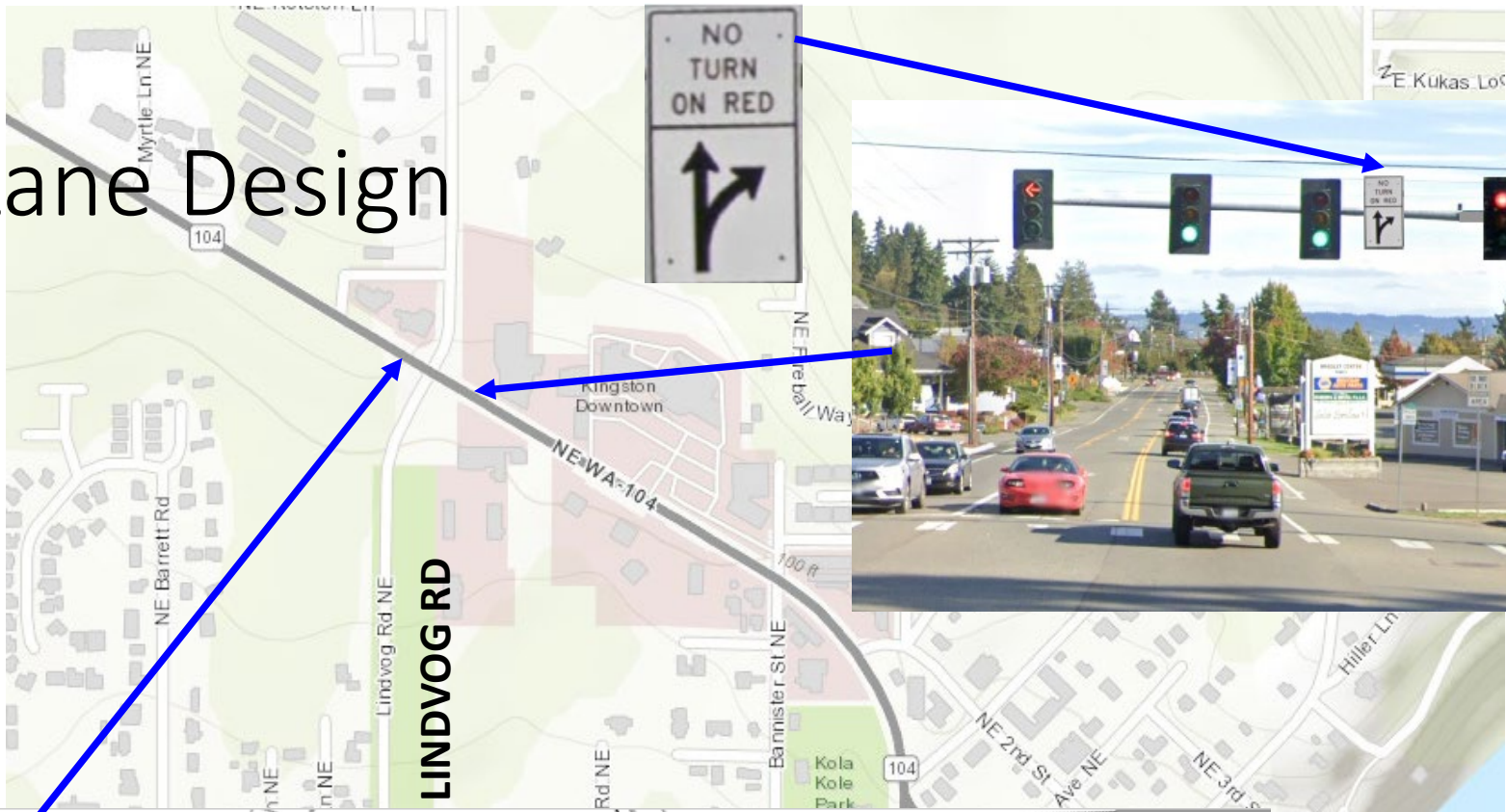




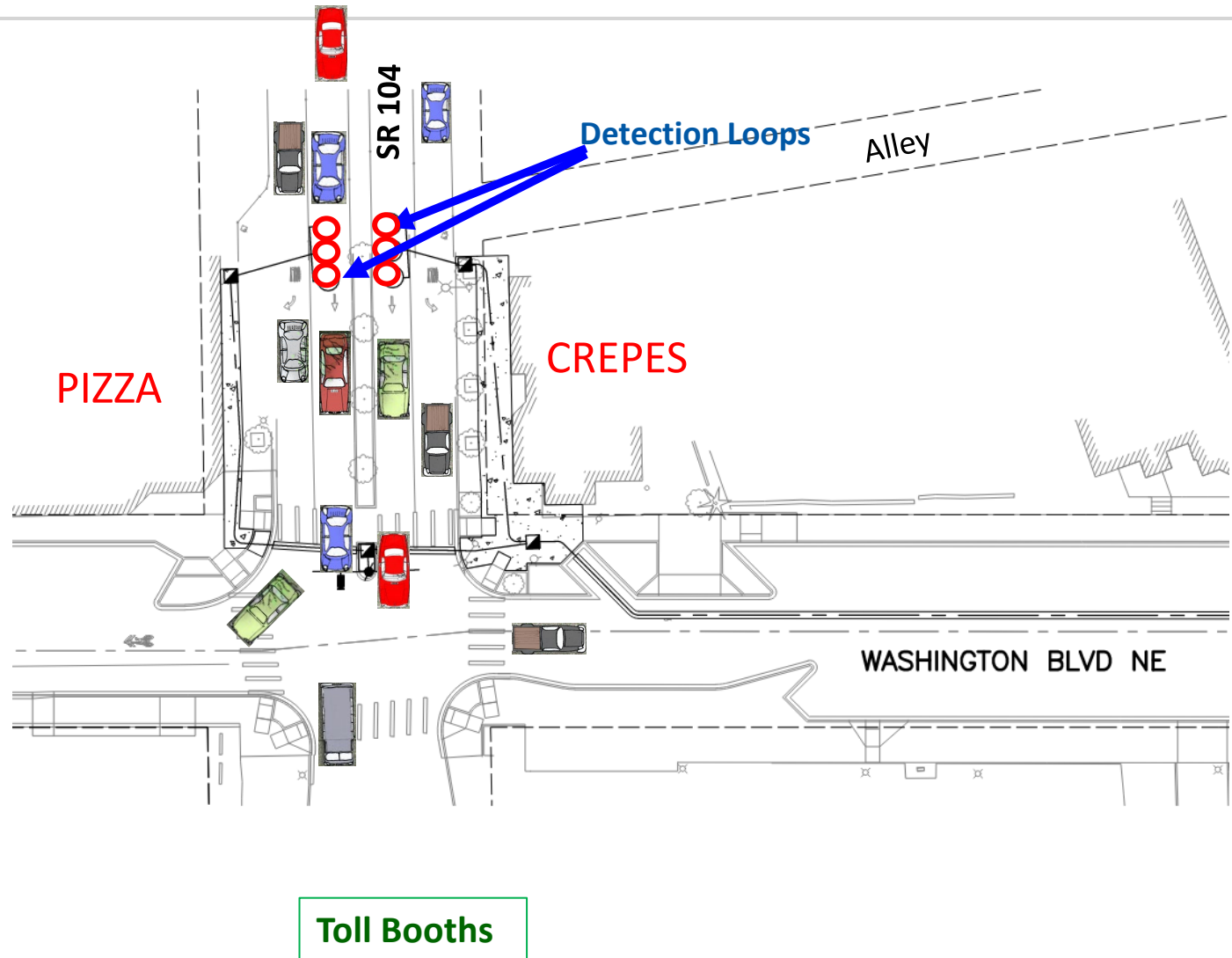
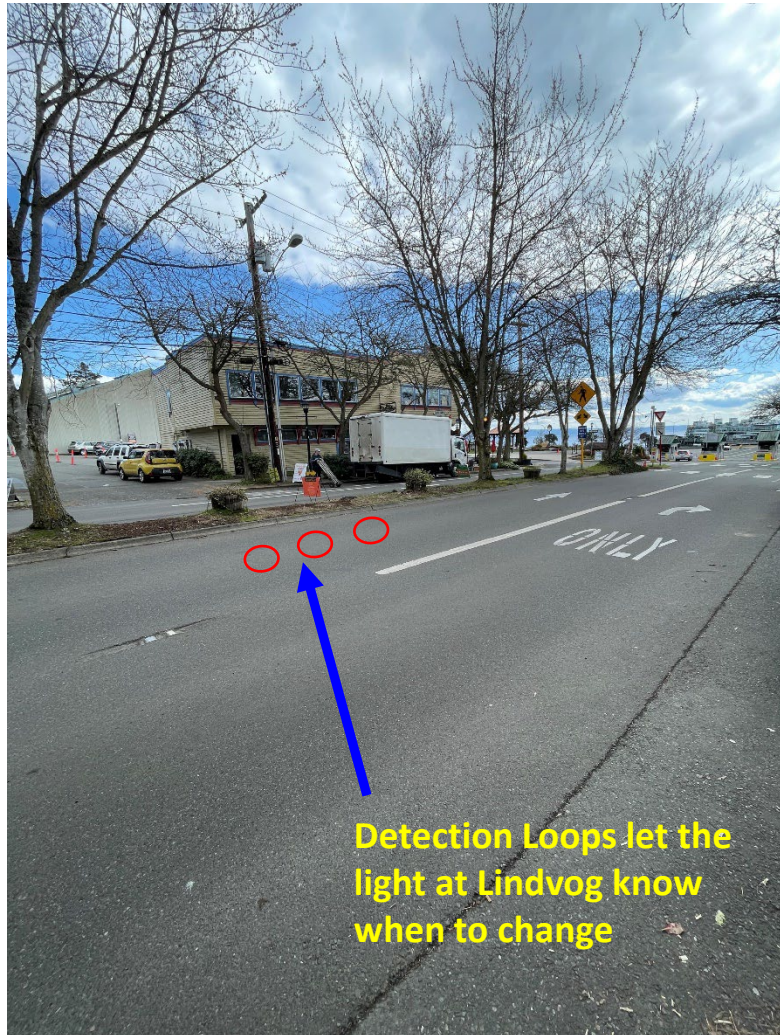
Project Benefits

- Reduced ferry traffic congestion within Kingston
- Access to businesses & community
- Revived economic vitality
- Revived circulation
- Improved transit reliability
- Predictability for ferry users

Holding Lane Design



Detection Loops





License Plate Reader

Traffic Signal Controls
release of vehicles to
Toll Booths

Detectors in road let
light at Lindvog know
when there is space
for more vehicles

License Plate Reader

How the System Works

Operations, Schedule & Limitations

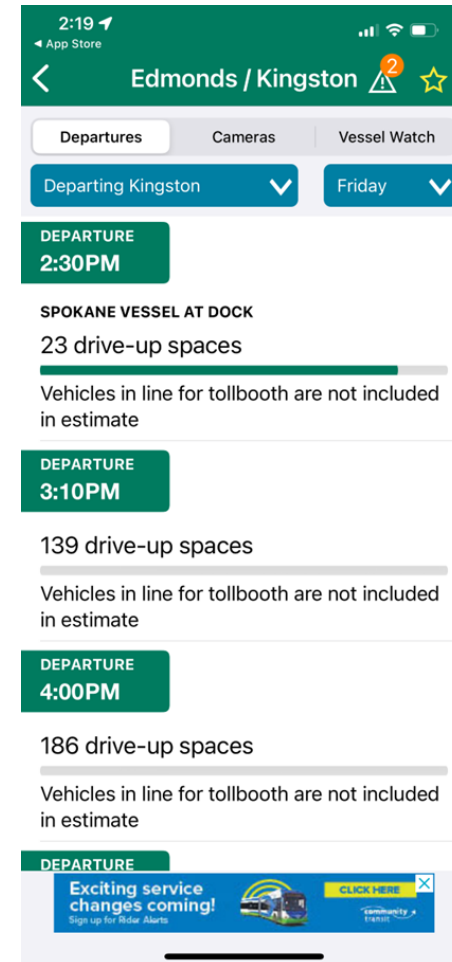
Continuous Limitations

- Adds time and miles for residents who will need to route to Lindvog
- Additional traffic on Barber Cut Off Road
- Concerns about U-turns

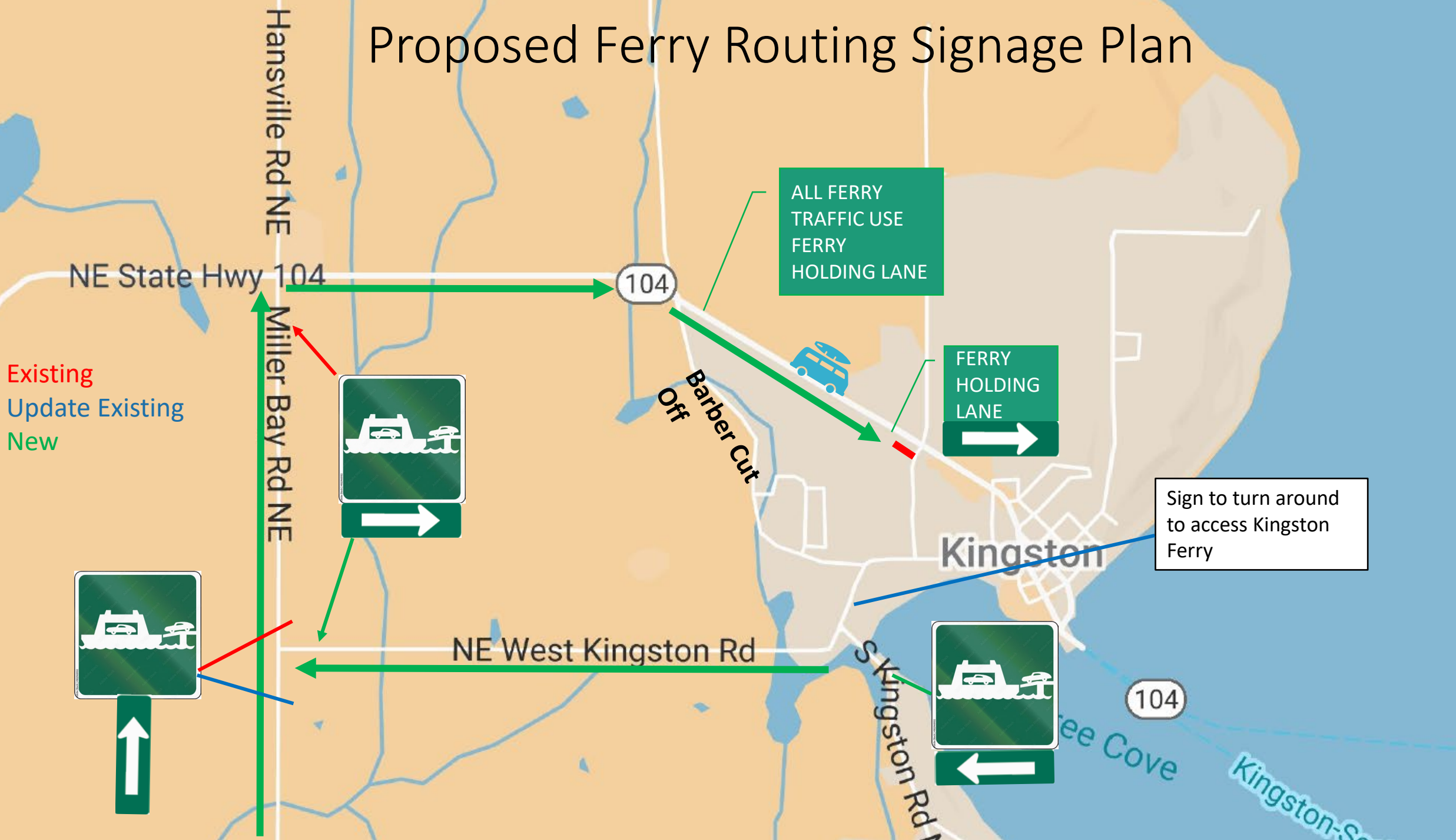
Operations, Schedule & Limitations

Non-Continuous Benefits & Limitations

- Mitigates concerns of continuous operation:
 - *Additional time and miles driving to Lindvog*
 - *Additional traffic on Barber Cut Off Road*
 - *U turns on SR 104 to get into the holding lane*
- Will not eliminate gridlock in Kingston at all times
- Schedule will need to be decided and posted on WSDOT app



Proposed Ferry Routing Signage Plan

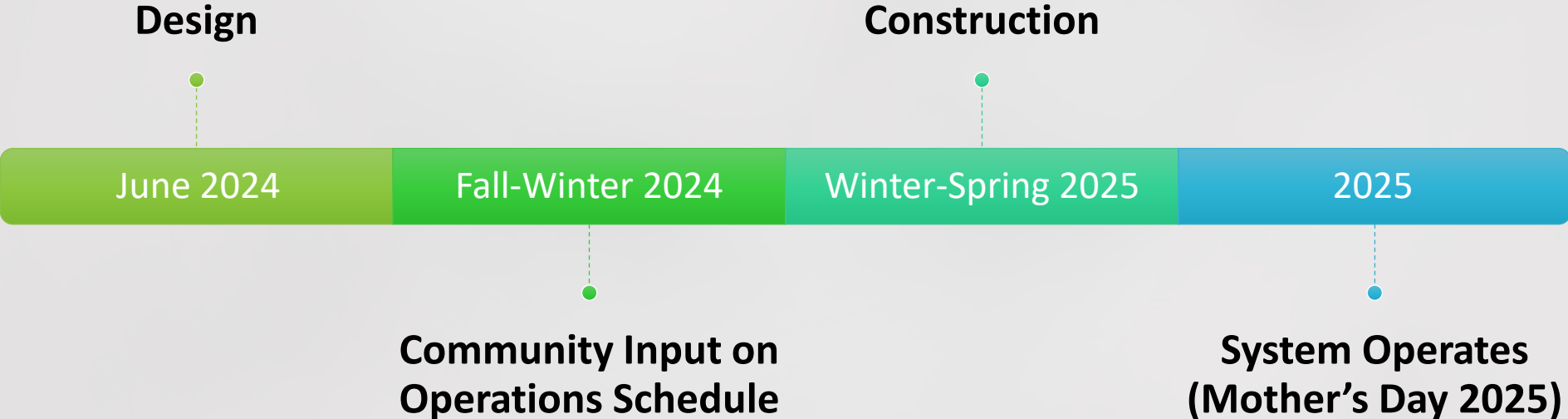


Public Input

- We are gathering data on traffic patterns
- Continue coordination with Working Group
- We will come back to KCAC to present potential schedule options



Timeline



Learn More

- **Kitsap County Project Page:** kcowa.us/ATMS
- **WSDOT**
Page: <https://wsdot.wa.gov/construction-planning/search-projects/sr-104-kingston-ferry-terminal-traffic-improvement>
- **Port of Kingston Background Information:** <https://portofkingston.org/governance-2/>





Thank you!

Project Contacts

Tim Beachy, Project Manager

tbeachy@kitsap.gov or 360.337.5777

Eirik O'Neal, Outreach Coordinator

eoneal@kitsap.gov or 360.337.5777